

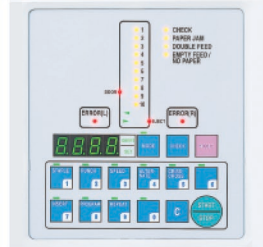
FC 10 TWIN TOWER SYSTEM

AUTOMATIC 20-BIN FRICTION COLLATING SYSTEM · collates variety of paper stocks and weights at speeds up to 3,600 sets per hour* · 275 sheet bin capacity* · high capacity stacker · collator units can be used in tandem or separately while connected · touch-button control panel with LED 4 digit counter simplifies set-up and operation · programming modes include preset batch, insertion, and an alternate bin mode for continuous production · adjustable stacking table for straight or criss-cross stacking · self-centering feed guides eliminate the need to reposition on-line bookletmakers for different size stock · adjustable feed and separator pressures on each bin · "bin empty" sensor · extra large, detachable feed trays · bases with casters are optional (shown)

Dimensions (D x W x H): 27 3/4 x 86 1/2 x 41 1/4 inches (90 1/2 W, 63 H with bases), Shipping weight: 487 lbs. (587 with bases)



CONTROL PANEL



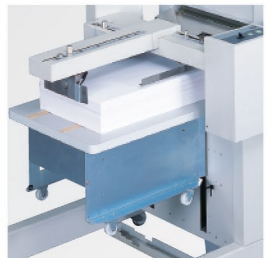
Programming and operation is controlled from an easy-to-use touch-button control panel.

CRISS-CROSS STACKING



The criss-cross stacking feature allows easy set separation.

HIGH CAPACITY STACKER



The high capacity stacker can stack up to 3,200 collated sheets (straight or offset).

FC 10 TWIN TOWER

Number of bins	20
Bin capacity	275 sheets*
Paper size	3 3/4" x 5 7/8" to 12 7/8" x 18 1/2"
Paper weight	20 to 100 lbs.
Speed	3,600 sets/hr*
Power supply	110 V, 60 Hz

* may vary due to variations in paper and power supply

Dealer: **LSS Digital**
4501 S. Pinemont #100
Houston, Texas 77041

LSS Digital
1331 U.S. Highway 80 #12
Mesquite, Texas 75150

877.460.1212 toll free both locations

MBM
CORPORATION

3134 Industry Drive
North Charleston, South Carolina 29418
800-223-2508, fax: 843-552-2974
www.mbmcorp.com

IDEAL.MBM
CORPORATION

1 Regan Road, unit 12
Brampton, Ontario L7A 1B8
800-387-2528, fax: 905-840-1114
www.ideal-mbm.com